

HOW TO CHOOSE THREAD COLOR FOR A BEAD CROCHET PROJECT

Thread color can be one of the most interesting elements in a bead crochet project. Sometimes, you may prefer to match the thread so as not to detract from the color of the beads. Other times, however, you may find that using a contrasting thread color really enhances the look of a piece.

1. Matching Thread Color

Thread color that matches the color of the bead “disappears” (Fig 1).



Fig 1

2. Subtly Different Shade

Thread that is a darker or lighter hue of the bead color can add nice depth (Fig 2).



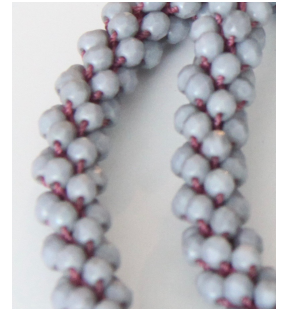
Fig 2

3. Contrasting Color with Opaque Beads

Thread color contrasts an opaque bead yields a subtle but interesting result (Fig 3).



Fig 3



4. Contrasting Color with Translucent Beads

Thread color that contrasts a translucent bead is dramatic. Fig 4 shows the same pale yellow bead strung with mint green thread (left) and deep coral thread (right).



Fig 4

5. Clear Beads with Visible Thread

Any thread color seen through a clear bead can be the solution if a bead color is hard to find, such as hot pink as seen in Fig 5.



Fig 5